

Position Description

Position Title: Medical Imaging Technologist, Grade 2 – Night Shift

Classification:	Medical Imaging Technologist Grade 2 AG1-CW5
Business unit/department:	Radiology
Work location:	Austin Hospital <input checked="" type="checkbox"/> Heidelberg Repatriation Hospital <input type="checkbox"/> Royal Talbot Rehabilitation Centre <input type="checkbox"/> Other <input type="checkbox"/> (please specify)
Agreement:	Allied Health Professionals (Victorian Public Health Sector) Single Interest Enterprise Agreement 2021-2026
Employment type:	Full-Time or Part-Time
Hours per week:	Up to 40 (hours as per contract)
Reports to:	Deputy Chief Radiographer
Direct reports:	Nil
Financial management:	Budget: Nil
Date:	Dec 2025

Austin Health acknowledges the Traditional Custodians of the land on which we operate, the Wurundjeri Woi Wurrung People of the Kulin Nation. We pay our respects to Elders past and present and extend that respect to all Aboriginal and Torres Strait Islander peoples.

Position purpose

To be responsible for the timely provision of high quality examinations across multiple modalities operated out of the Emergency Radiology Department, primarily during the out of hours environment of night shift.

To effectively respond to and manage any emergency or heightened demand periods, ensuring adequate staff resources are utilised and escalation pathways are followed to provide excellent patient care and access to Radiology services.

There is a requirement to perform on-call and shift duties as rostered; this includes evening shifts, night shifts, weekend shifts and participation in the on-call roster

About Radiology

Austin Health is a general teaching hospital on three campuses and is associated with The University of Melbourne. The Radiology Department provides a comprehensive range of diagnostic and

interventional services and operates at both the Austin and Repatriation Hospitals. The nature of the work requires extended hours provision of service, and all staff are expected to contribute appropriately to cover the extended hours including night shift and weekends and participation in the on-call roster.

At the Austin campus, Radiology provides an extensive range of services to inpatient, ED and Outpatient clinics. The range of services includes General, Fluoroscopy, Ultrasound, MRI, CT, Mobile and Theatre, Angiography and Interventional procedures.

At the Repatriation Campus, we provided radiology services to all remaining Outpatient clinics as well as externally referred patients and some inpatients. The range of services includes General, Ultrasound, CT, Fluoroscopy, Mobiles and Theatre.

The department also provides education and training for Medical Imaging Technologists and others, and conducts and contributes to research activities.

Position responsibilities

A Grade 2 Night Shift Medical Imaging Technologist is required to:

- Establish and maintain a high standard of practice in a range of modalities, including, X-ray, Mobiles, CT, OPG, Cath Lab and II/Theatre (relevant training provided as required)
- Provide permanent night shift cover, supporting Austin Radiology service delivery to meet acute inpatient and ED imaging needs out of hours.
- Understand the principles of safety in the practice of medical imaging procedures, patient interaction and associated tasks, and implement safe practices.
- Work collaboratively with senior Emergency Radiology staff to ensure consistent service delivery, maintenance and improvement needs are both raised and met.
- Actively maintain a programme of continuing personal professional development.
- Participate in the department shift and out of hours roster as required on occasions.
- In conjunction with other senior staff, instruct, train and supervise other staff, interns and students
- Liaise with medical, nursing and clerical staff regarding scheduling and preparation of patients for examinations.
- Perform non-radiographic tasks essential to the operation of the Radiology Department as required for efficient operation
- Ensure a high standard of equipment performance by appropriate quality assurance, care, cleaning, operation testing and calibration where appropriate
- Ensure a high level of work quality, develop, implement and monitor quality improvement activities within the department/ward, in accordance with Austin Health Policies as varied from time to time.
- Maintain accreditation in mandatory competencies
- Meets the key selection criteria essential for the performance of the position
- Ensure safe work practices and environment in accordance with Austin Health Policies as varied from time to time.
- Undertake additional responsibilities. Examples include shift supervision, QA initiatives, portfolio oversight, research and/or improvement initiatives.



Our actions
show we care



We bring
our best



Together
we achieve



We shape
the future

Selection criteria

Essential Knowledge and skills:

- Have a number of years experience in a range of modalities in an acute hospital environment and have demonstrated high standards of practice and the ability to work under pressure, be flexible and prioritise work appropriately, particularly with competing demands from acute priorities.
- As a guide, the suitable applicant will be a minimum of 3-4 years qualified with Xray and CT experience. Training will be provided on day shift prior to commencing night shift with an expectation of returning to day shift on a regular basis for refresher training and to up skill in any other areas deemed necessary for continued support of Radiology service delivery and growth.
- Have a thorough knowledge of examination requirements and the techniques available to achieve those requirements and have a good understanding of equipment performance as a basis for problem solving.
- Have demonstrated ability in problem solving and a willingness to accept and manage change
- Have a record demonstrating self development and continuing education as evidenced by a record of Continuing Professional Development
- Have a record demonstrating a flexible contribution to the work requirements in a team environment, as well as proven ability to operate independently as a sole practitioner when required.
- Excellent interpersonal skills and confidence in communicating appropriately with patients and other health professionals across various clinical situations.
- Demonstrated ability to carry out the physical aspects of the role of a Medical Imaging Technologist
- A commitment to Austin Health values:
 - Our Actions show we care
 - We Bring Our Best
 - Together we achieve
 - We shape the Future

Desirable but not essential:

- Previous night shift experience in an acute hospital setting.
- Familiarity with any of the following platforms: Siemens CT, Shimadzu Xray and mobiles, Carestream OPG, AGFA PACS, AGFA QDoc RIS, GE OEC II.
- Specialist experience in cath lab, PACS and/or DSA would be advantageous.
- Have demonstrated leadership skills with respect to work quality and organisation.
- Have an understanding of Quality Improvement and its application as demonstrated by participation in such activities.



Our actions
show we care



We bring
our best



Together
we achieve



We shape
the future

Professional qualifications and registration requirements

- Be registered as a Medical Radiation Practitioner by the Australian Health Practitioner Regulation Agency, (AHPRA)
- Have a current licence for radiation use with the Victorian Department of Health

Quality, safety and risk – all roles

All Austin Health employees are required to:

- Maintain a safe working environment for yourself, colleagues and members of the public by following organizational safety, quality and risk policies and guidelines.
- Escalate concerns regarding safety, quality and risk to the appropriate staff member, if unable to rectify yourself.
- Promote and participate in the evaluation and continuous improvement processes.
- Comply with the principles of person-centered care.
- Comply with requirements of National Safety and Quality Health Service Standards and other relevant regulatory requirements.

Other conditions – all roles

All Austin Health employees are required to:

- Comply with the Austin Health's Code of Conduct policy, as well as all other policies and procedures (as amended from time to time).
- Comply with all Austin Health mandatory training and continuing professional development requirements.
- Provide proof of immunity to nominated vaccine preventable diseases in accordance with Austin Health's immunisation screening policy.
- Work across multiple sites as per work requirements and/or directed by management.

General information

Cultural safety

Austin Health is committed to cultural safety and health equity for Aboriginal and/or Torres Strait Islander People. We recognise cultural safety as the positive recognition and celebration of cultures. It is more than just the absence of racism or discrimination, and more than cultural awareness and cultural sensitivity. It empowers people and enables them to contribute and feel safe to be themselves.

Equal Opportunity Employer

We celebrate, value, and include people of all backgrounds, genders, identities, cultures, bodies, and abilities. We welcome and support applications from talented people identifying as Aboriginal and/or Torres Strait Islander, people with disability, neurodiverse people, LGBTQIA+ and people of all ages and cultures.



Our actions
show we care



We bring
our best



Together
we achieve



We shape
the future

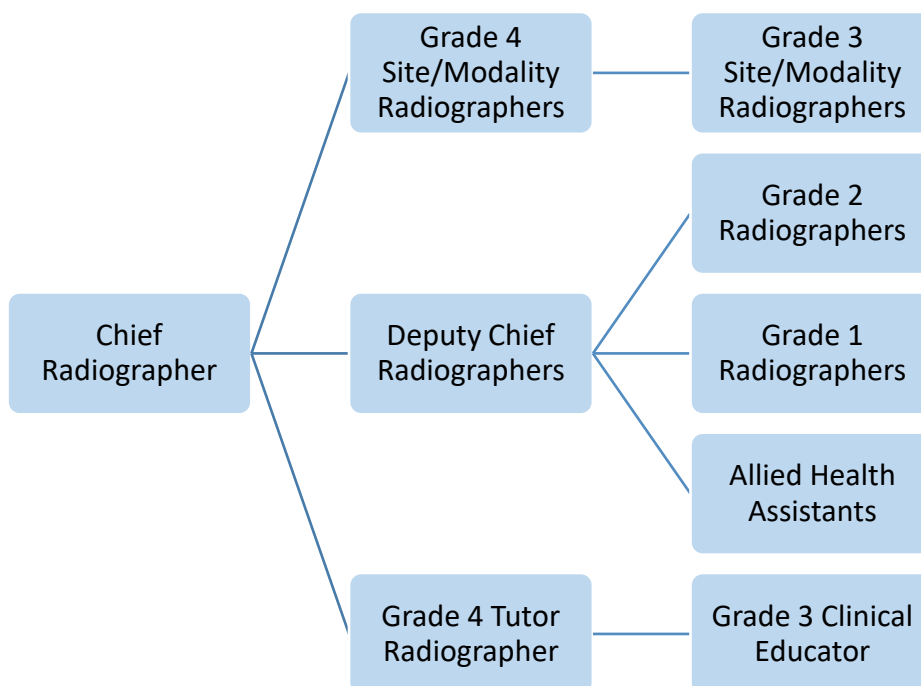
Austin Health is a child safe environment

We are committed to the safety and wellbeing of children and young people. We want children to be safe, happy and empowered. Austin Health has zero tolerance for any form of child abuse and commits to protect children. We take allegations of abuse and neglect seriously and will make every effort to mitigate and respond to risk in line with hospital policy and procedures.

Document Review Agreement

Manager Signature	
Employee Signature	
Date	

People Management Role-Direct Reports



Our actions
show we care



We bring
our best



Together
we achieve



We shape
the future